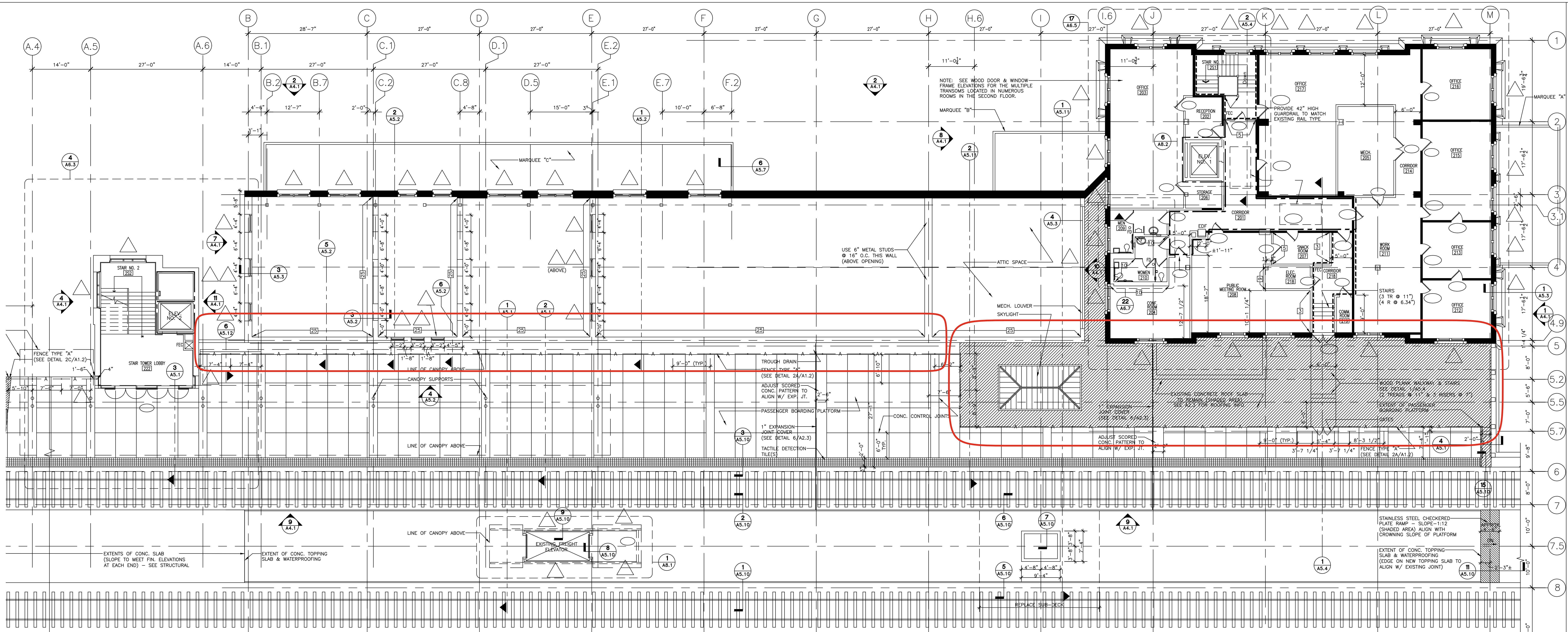
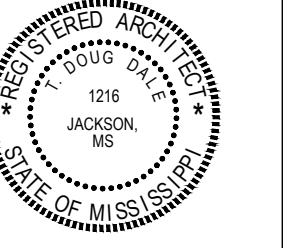




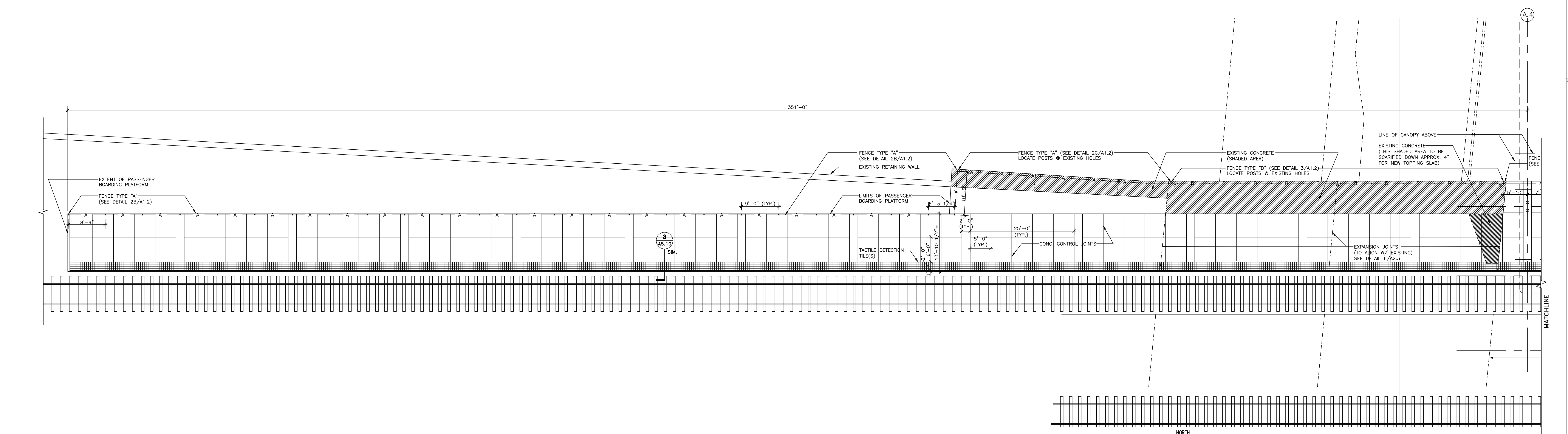
CENTRALBIDDING
FROM CENTRAL AUCTION HOUSE

**RFQ 25-003 Architectural/Engineering Services Roof Repair and
Replacement Union Station**
Jackson Redevelopment Authority

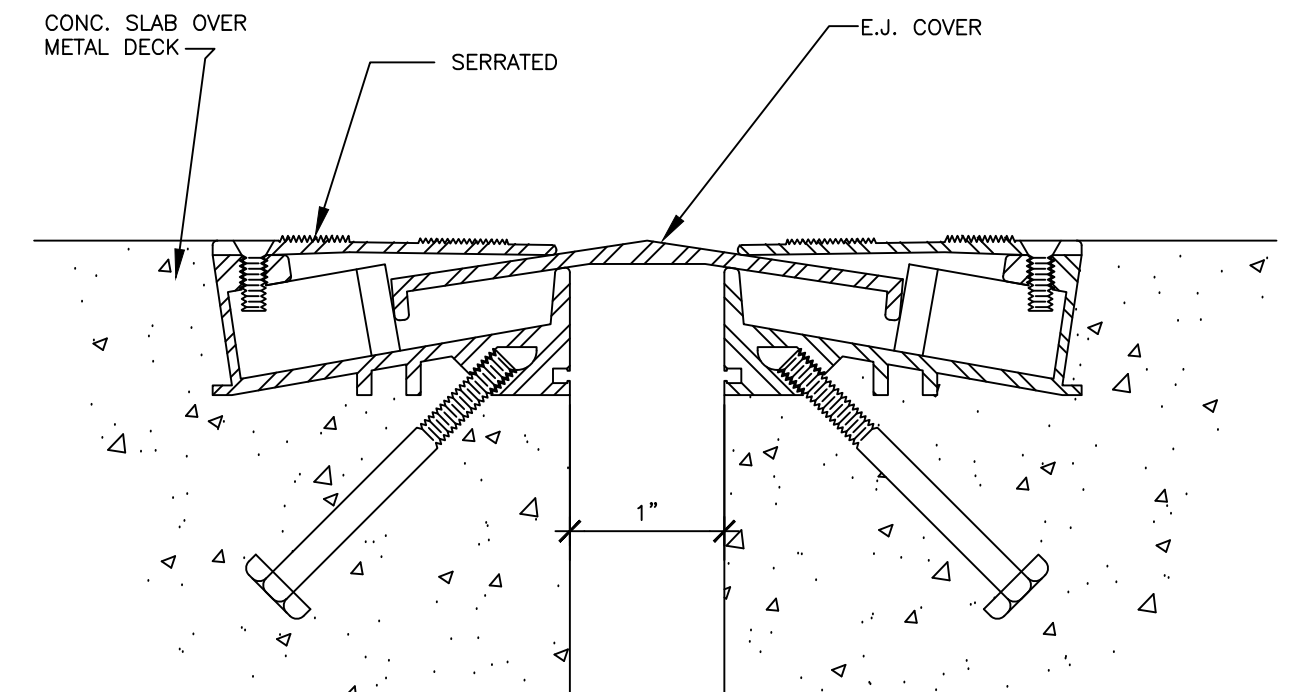
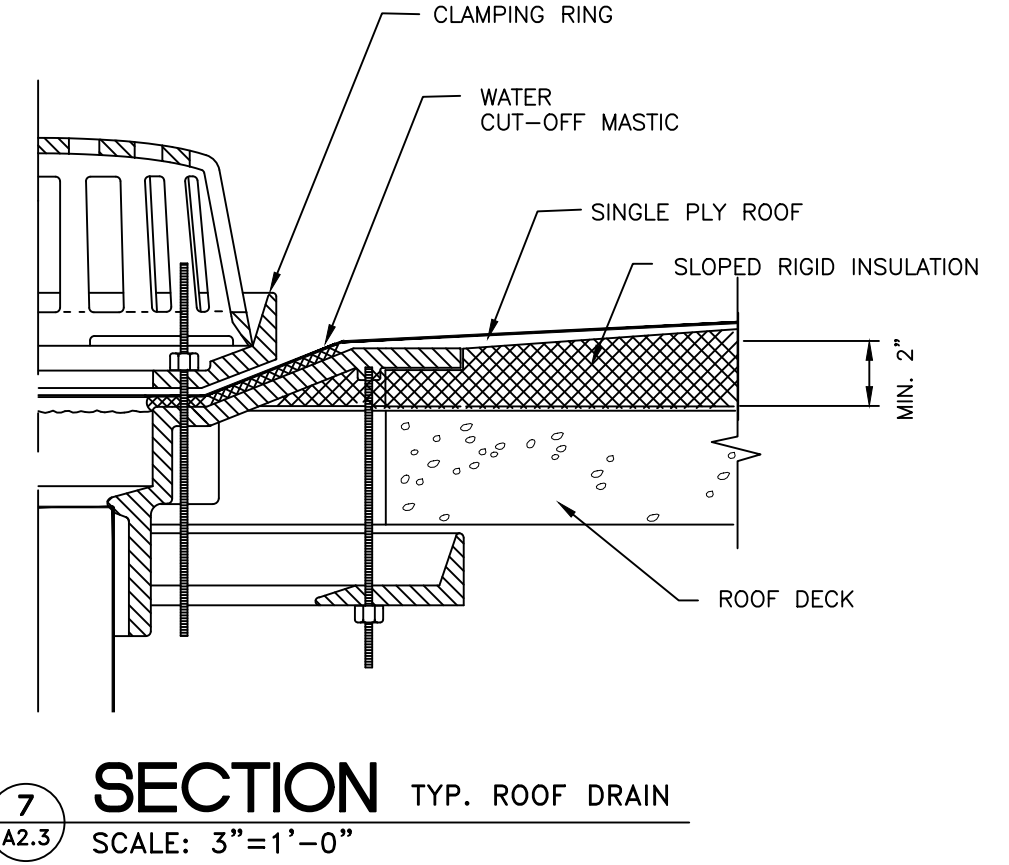
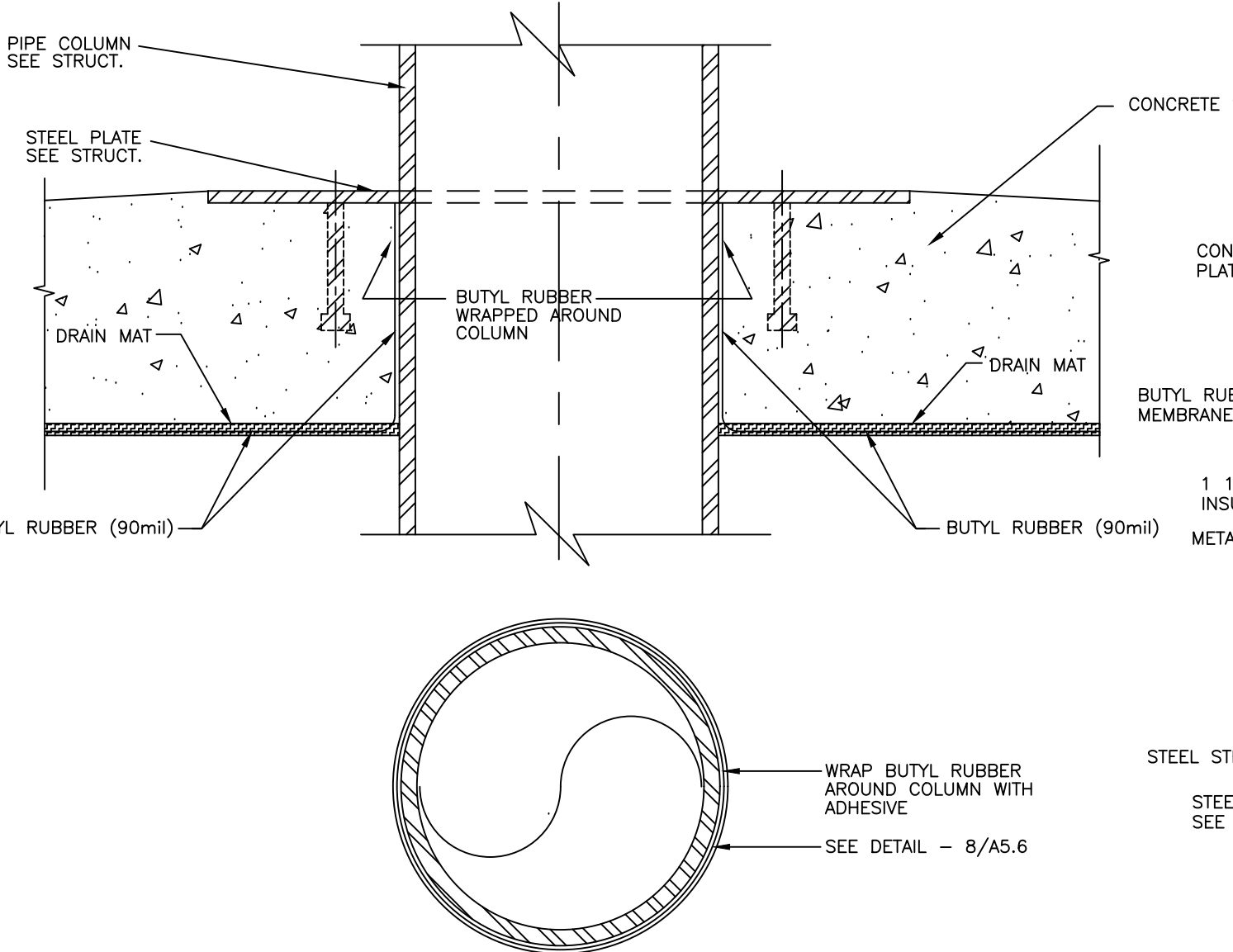
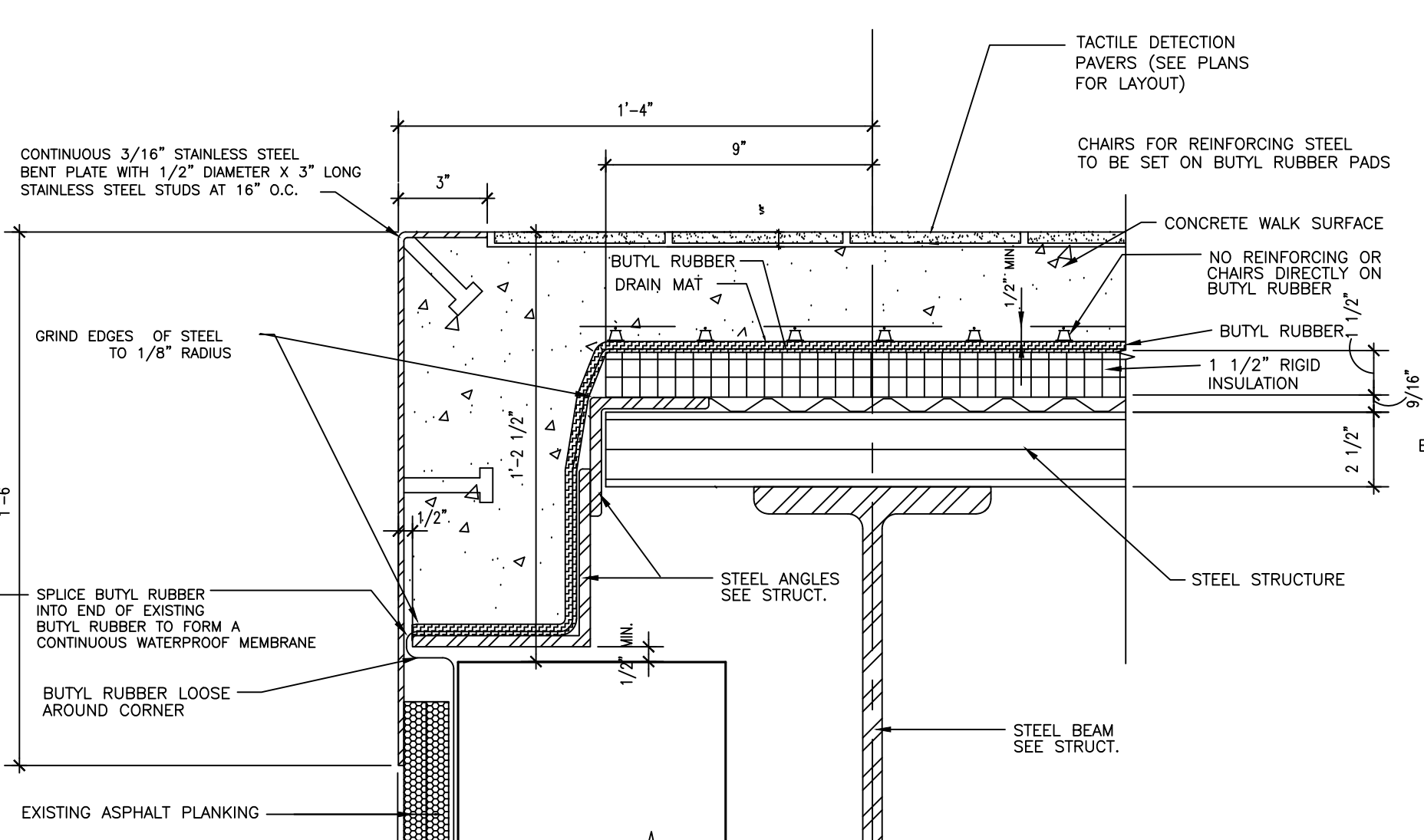
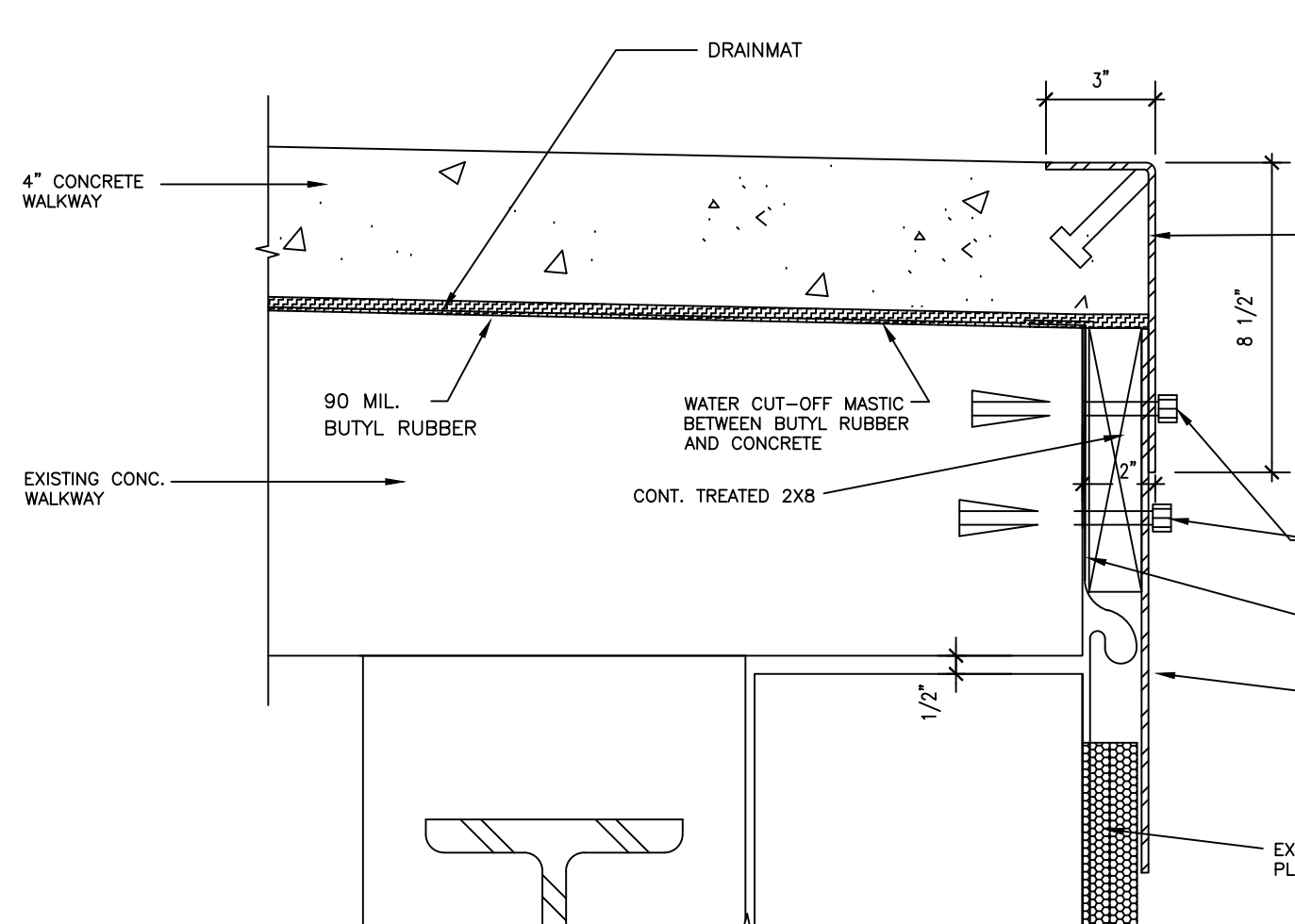
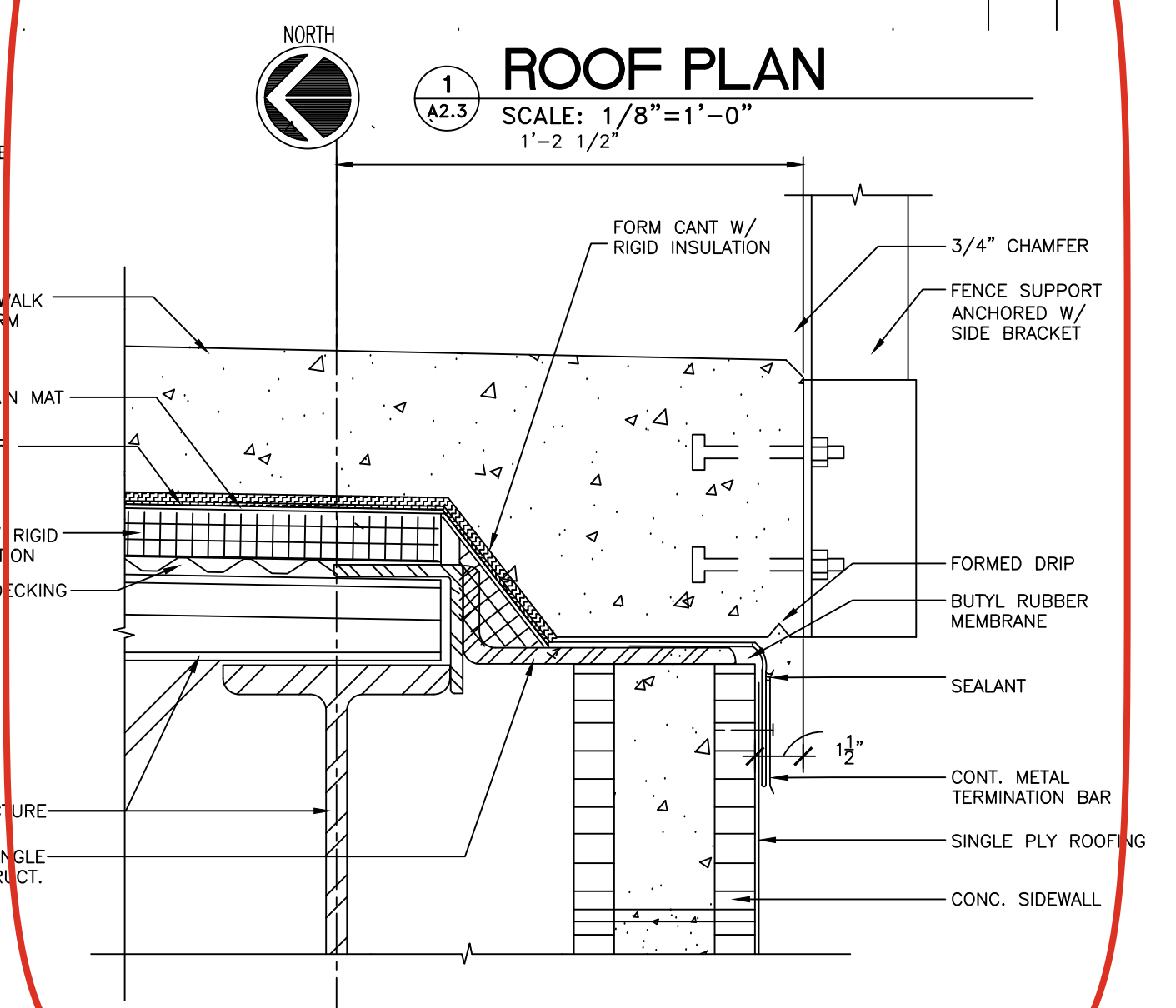
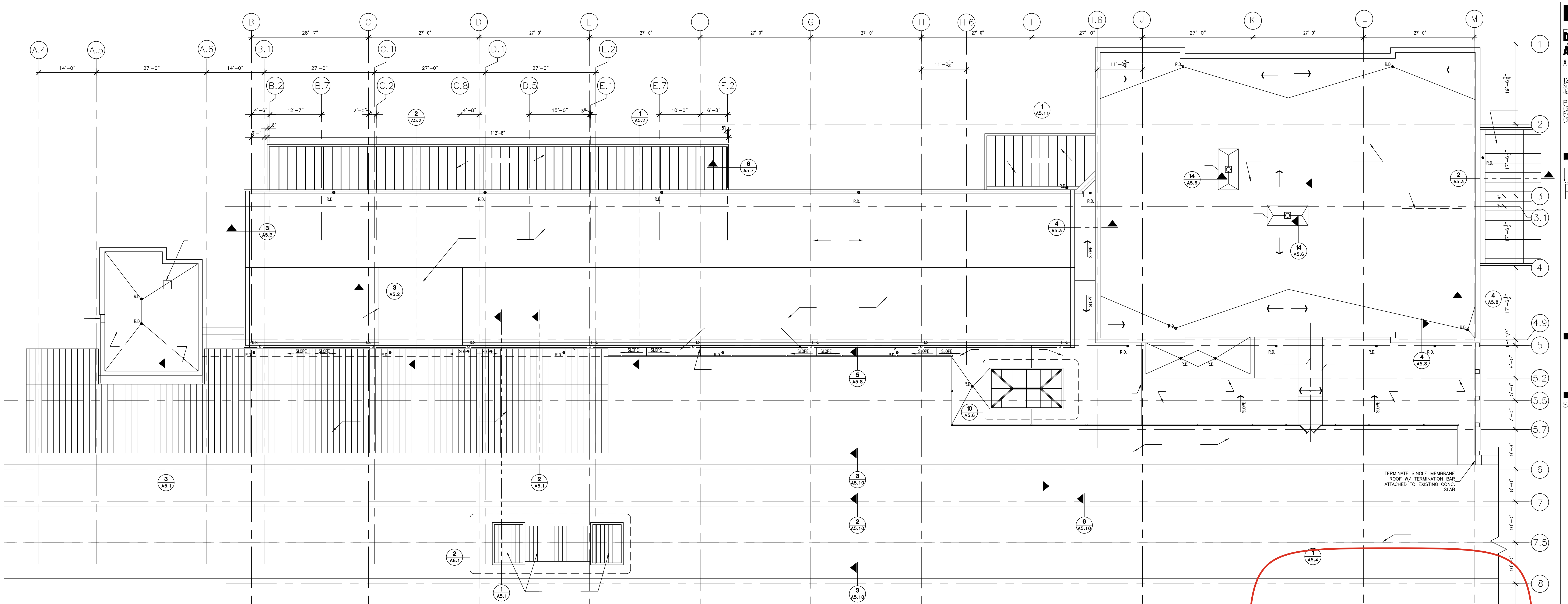
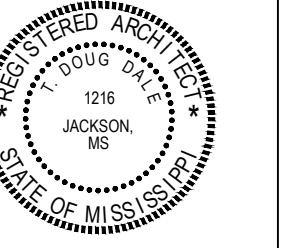
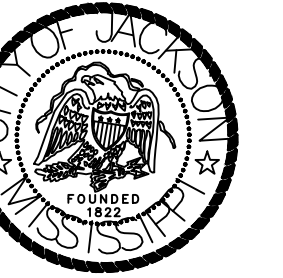
Project documents obtained from www.CentralBidding.com
04-Feb-2025 11:08:51 AM

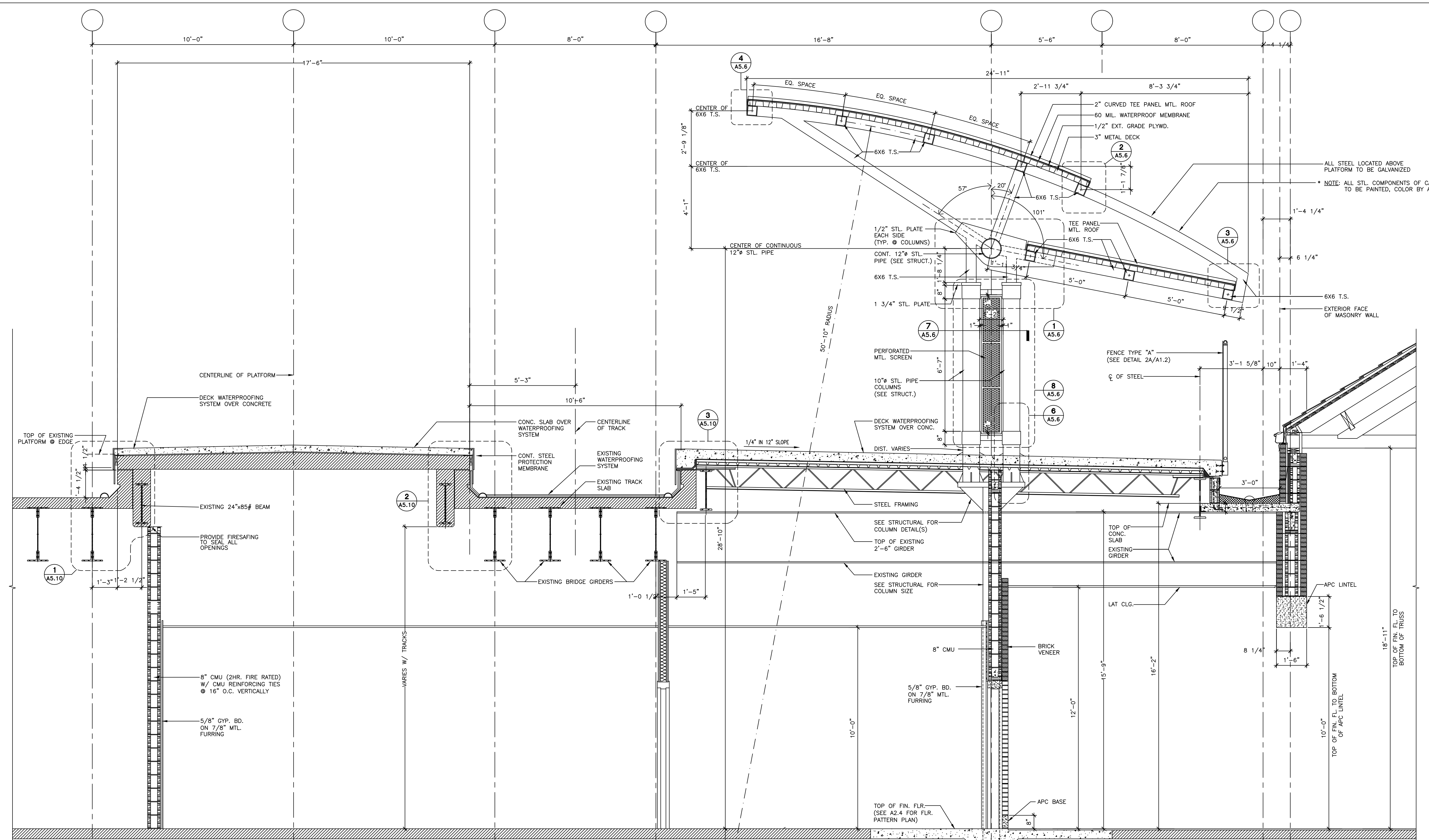
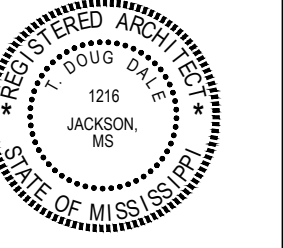
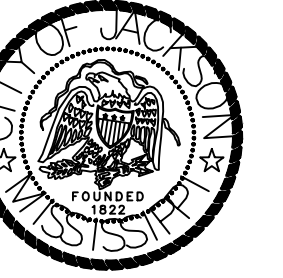


1 SECOND FLOOR PLAN
SCALE: 1/8"=1'-0"
GROSS AREA = 7,455 SQUARE FEET

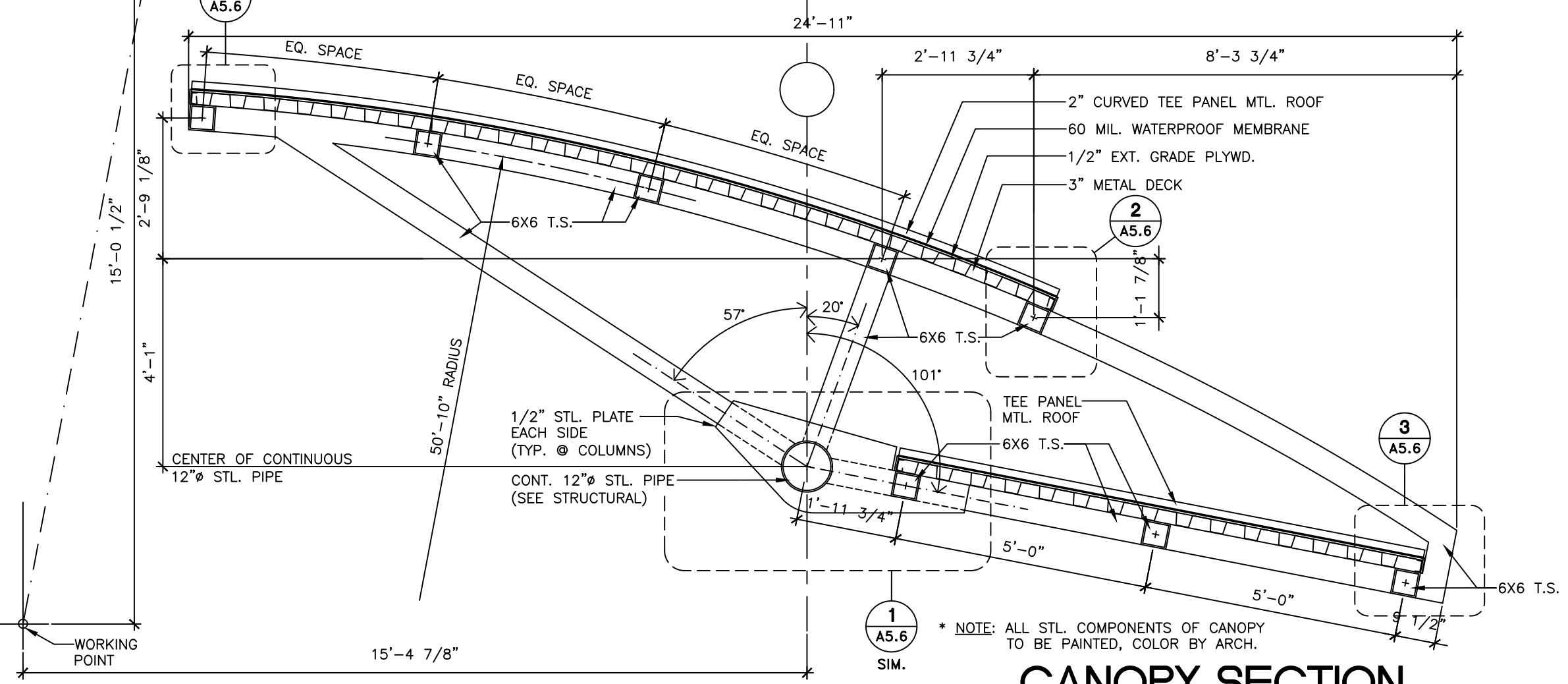


2 (PARTIAL) SECOND FLOOR PLAN
SCALE: 1/8"=1'-0"

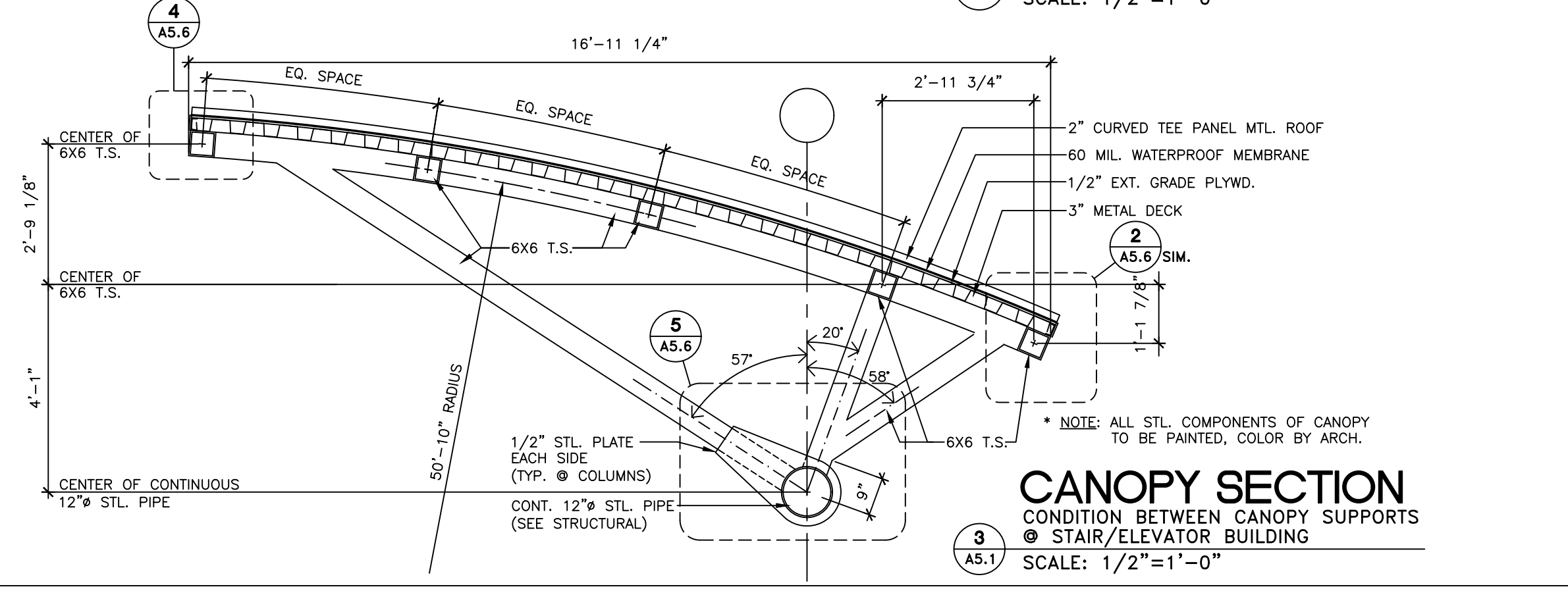




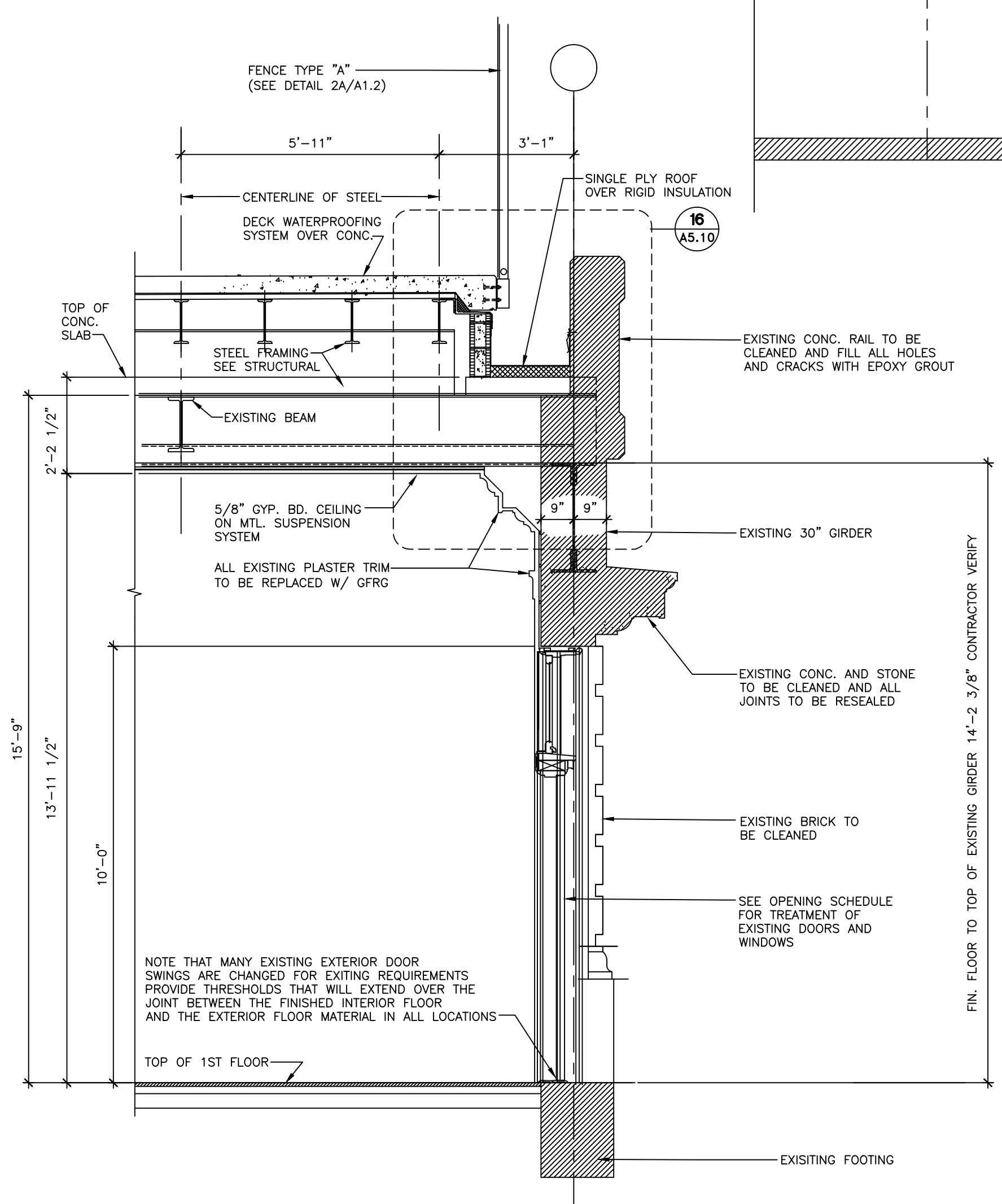
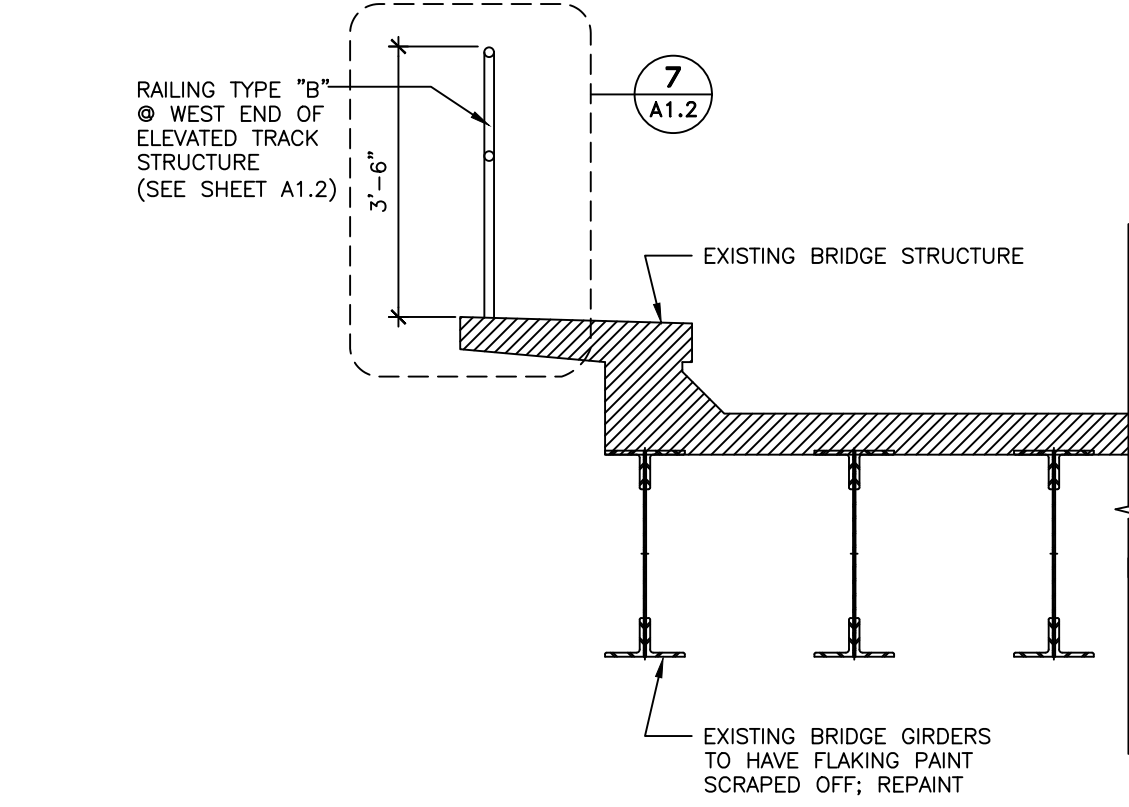
1 BUILDING SECTION
SCALE: 1/2"=1'-0"



2 CANOPY SECTION
TYP. CONDITION BETWEEN CANOPY SUPPORTS
SCALE: 1/2"=1'-0"



3 CANOPY SECTION
CONDITION BETWEEN CANOPY SUPPORTS
SCALE: 1/2"=1'-0"



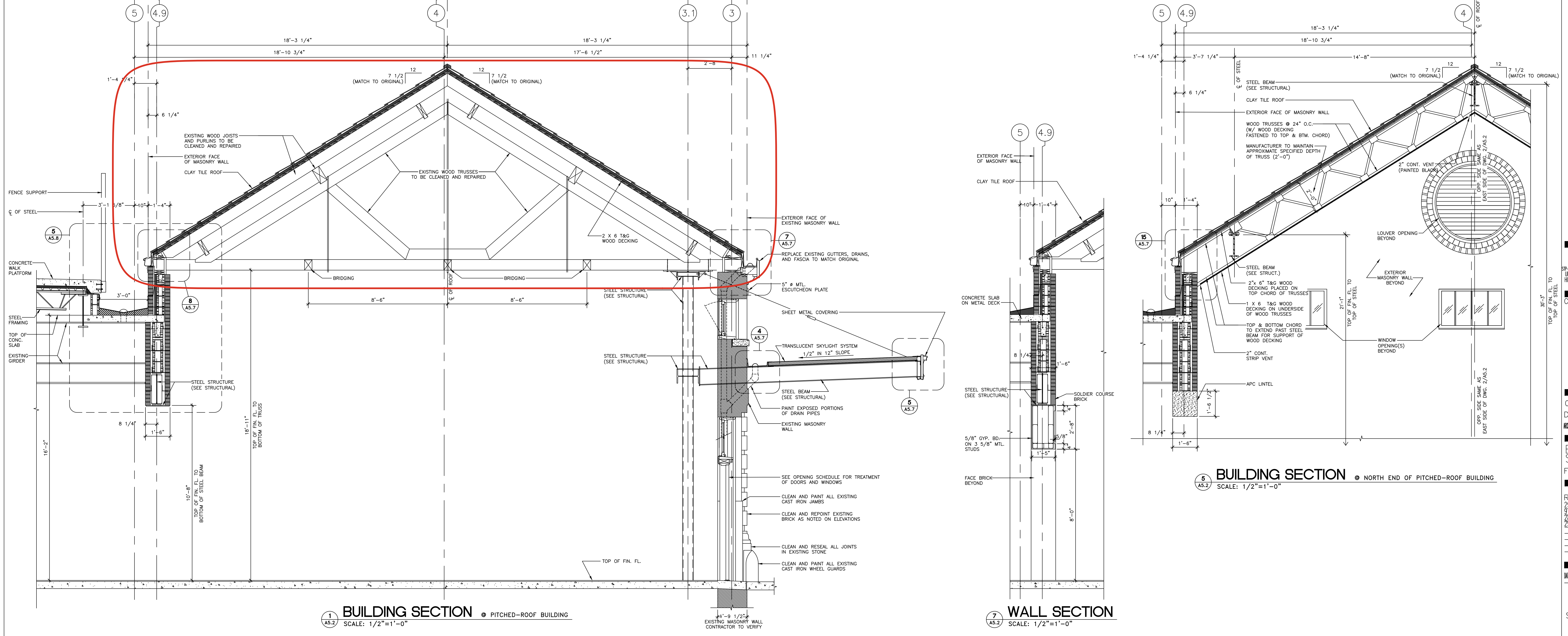
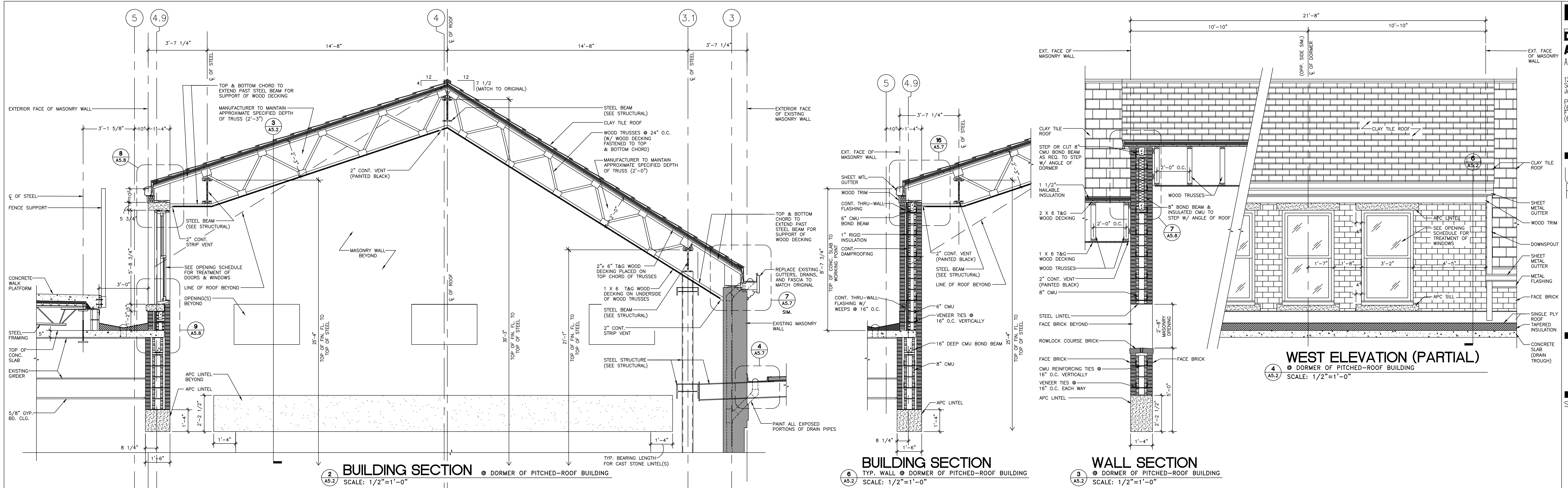
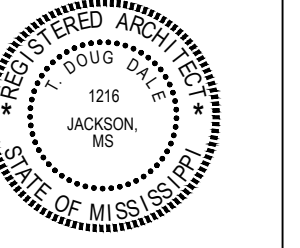
4 BUILDING SECTION
SCALE: 1/2"=1'-0"

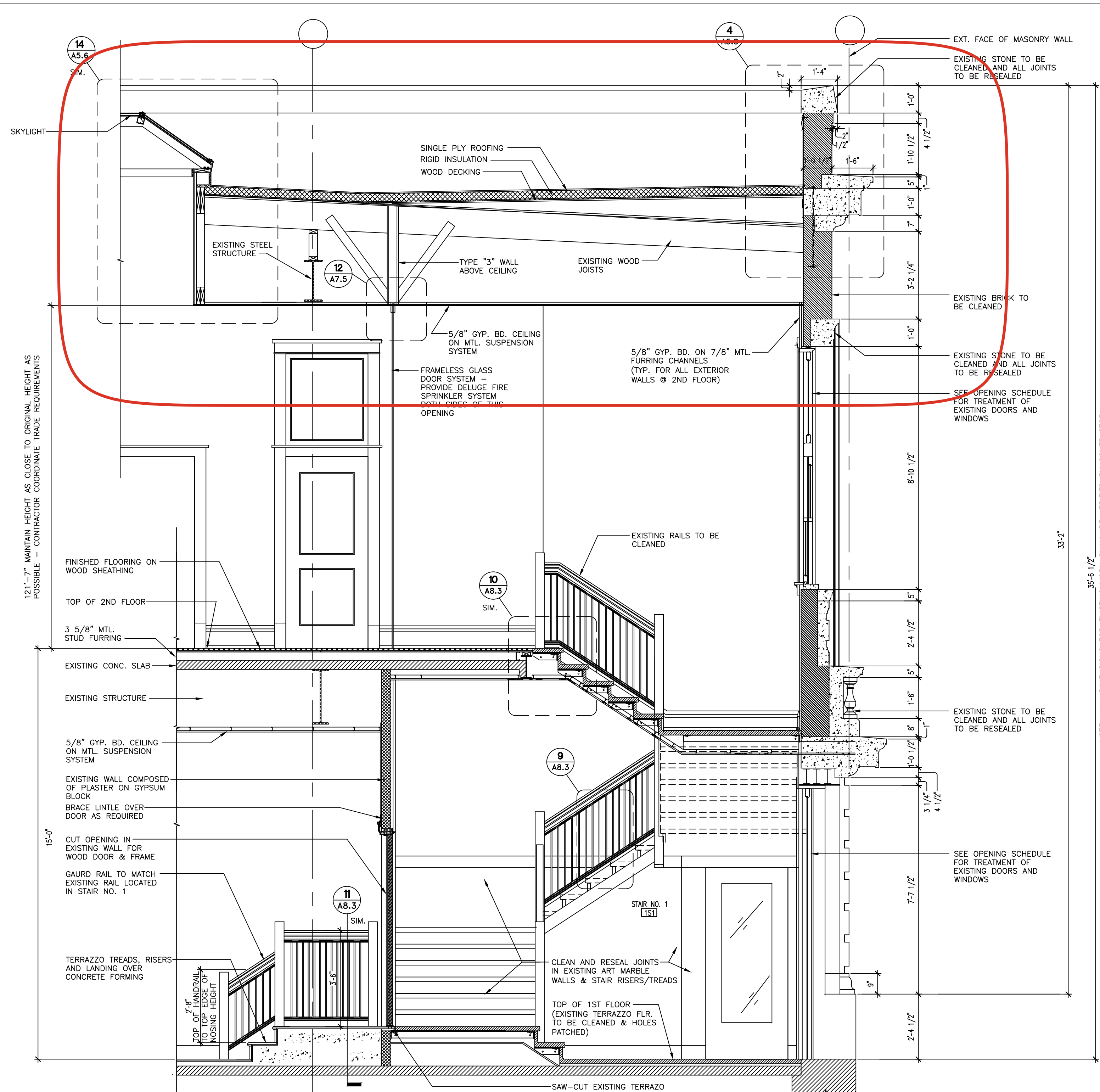
ALL STEEL LOCATED ABOVE PLATFORM TO BE GALVANIZED
NOTE: ALL STL. COMPONENTS OF CANOPY TO BE PAINTED, COLOR BY ARCH.

* NOTE: ALL STL. COMPONENTS OF CANOPY TO BE PAINTED, COLOR BY ARCH.

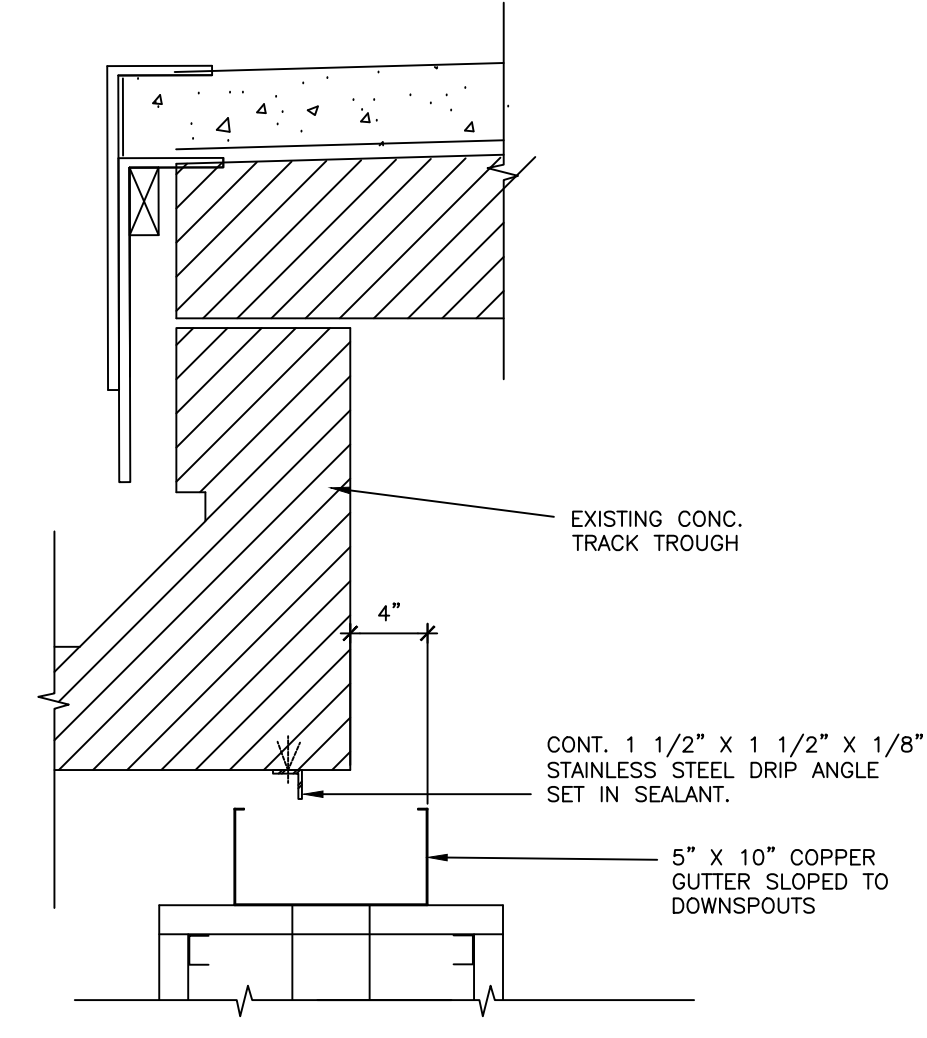
* NOTE: ALL STL. COMPONENTS OF CANOPY TO BE PAINTED, COLOR BY ARCH.

NOTE THAT MANY EXISTING EXTERIOR DOOR SWINGS ARE CHANGED FOR EXISTING REQUIREMENTS PROVIDE THRESHOLDS THAT WILL EXTEND OVER THE JOINT BETWEEN THE FINISHED INTERIOR FLOOR AND THE EXTERIOR FLOOR MATERIAL IN ALL LOCATIONS

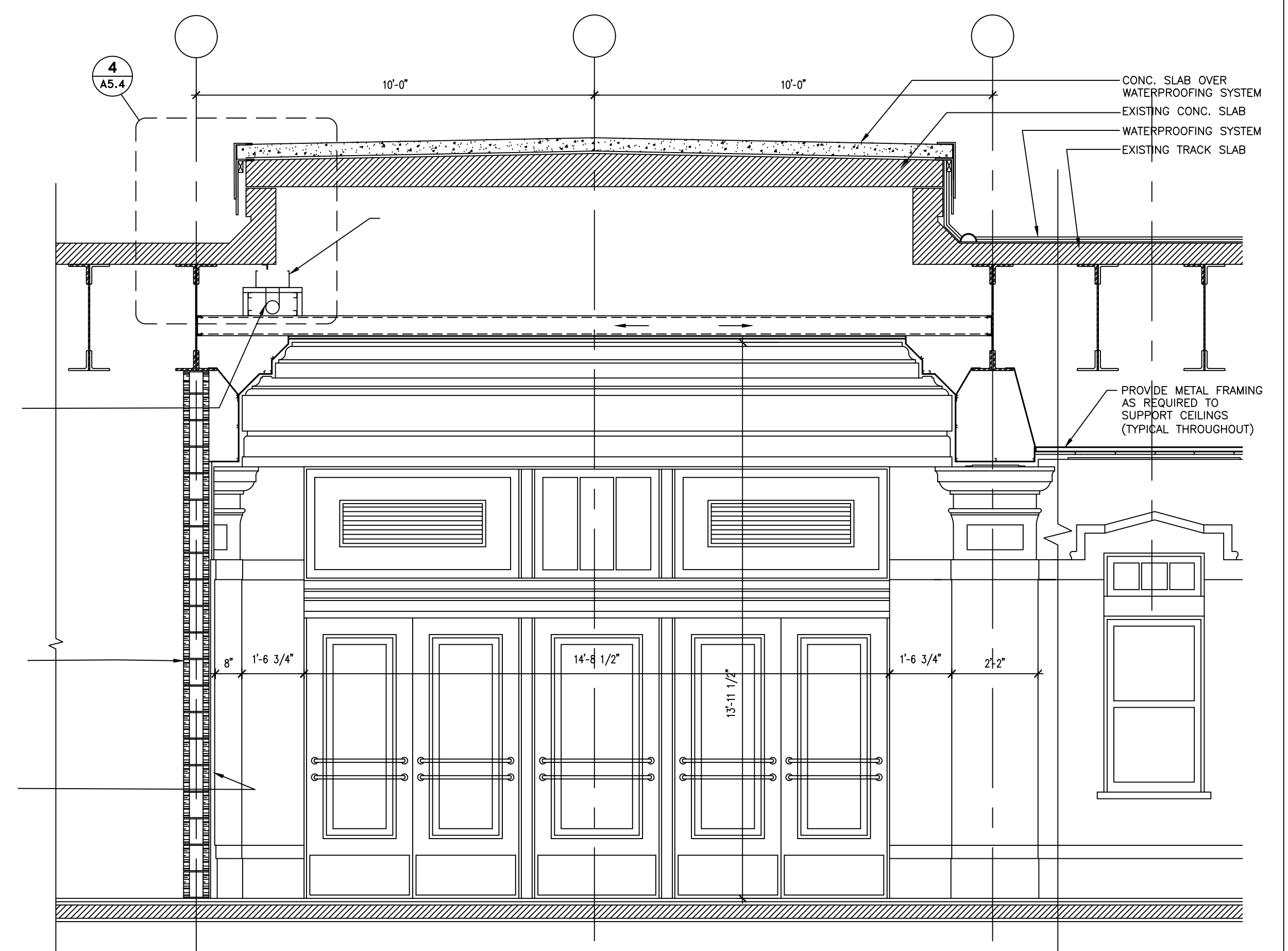




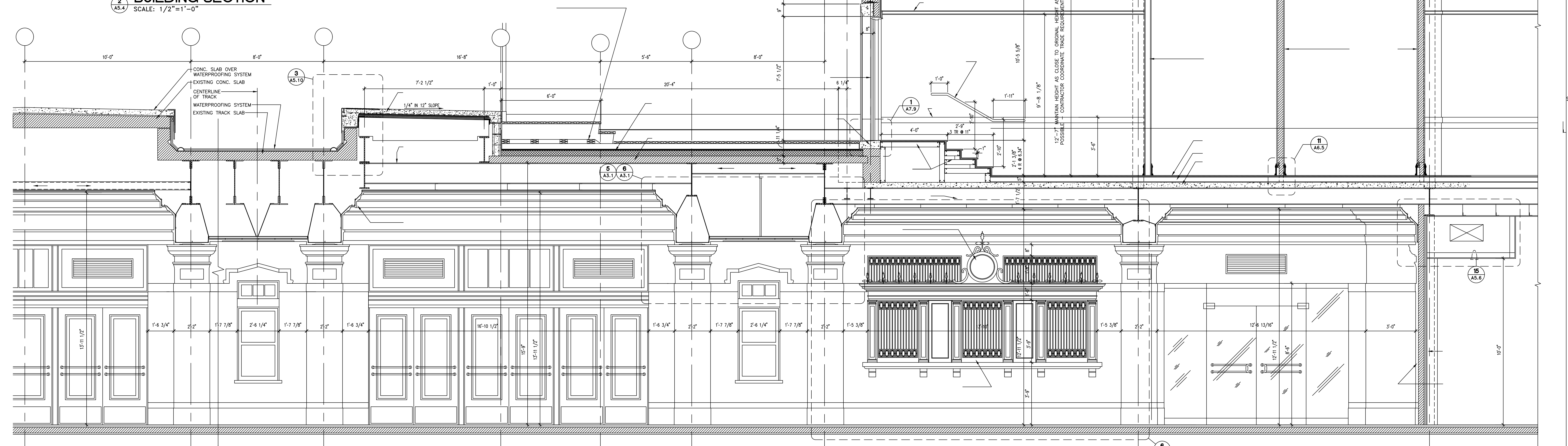
2 BUILDING SECTION
SCALE: 1/2"=1'-0"



4 GUTTER DETAIL
SCALE: 1 1/2"=1'-0"



3 BUILDING SECTION
SCALE: 1/2"=1'-0"



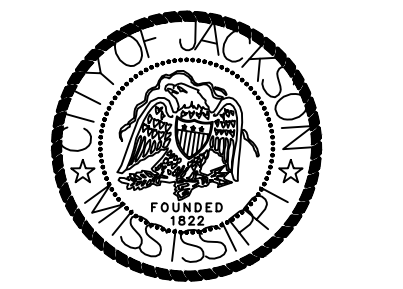
1 BUILDING SECTION
SCALE: 1/2"=1'-0"

NOTE: ALL DIMENSIONS FOR EXISTING WORK SHALL BE VERIFIED BY CONTRACTOR

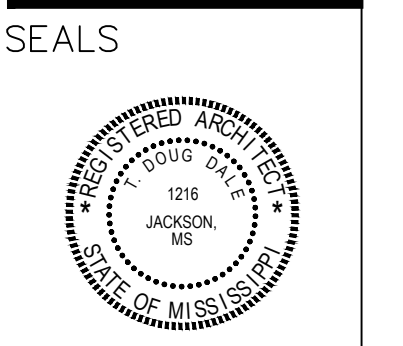
12'-7\"/>

DALE AND NE C ASSOCIATES ARCHITECTS P.A.
120 North Congress Street
Suite 110
Jackson, MS 39201
Phone:
(601) 352-5411
Fax:
(601) 352-5362

UNION DEPOT RESTORATION



TRANSPORTATION ENHANCEMENT PROJECT



DOT PROJECT NO. SP-2200(24)46-000-10-010-10
UNION DEPOT RESTORATION
HINDS COUNTY, MISSISSIPPI

CONSULTANTS

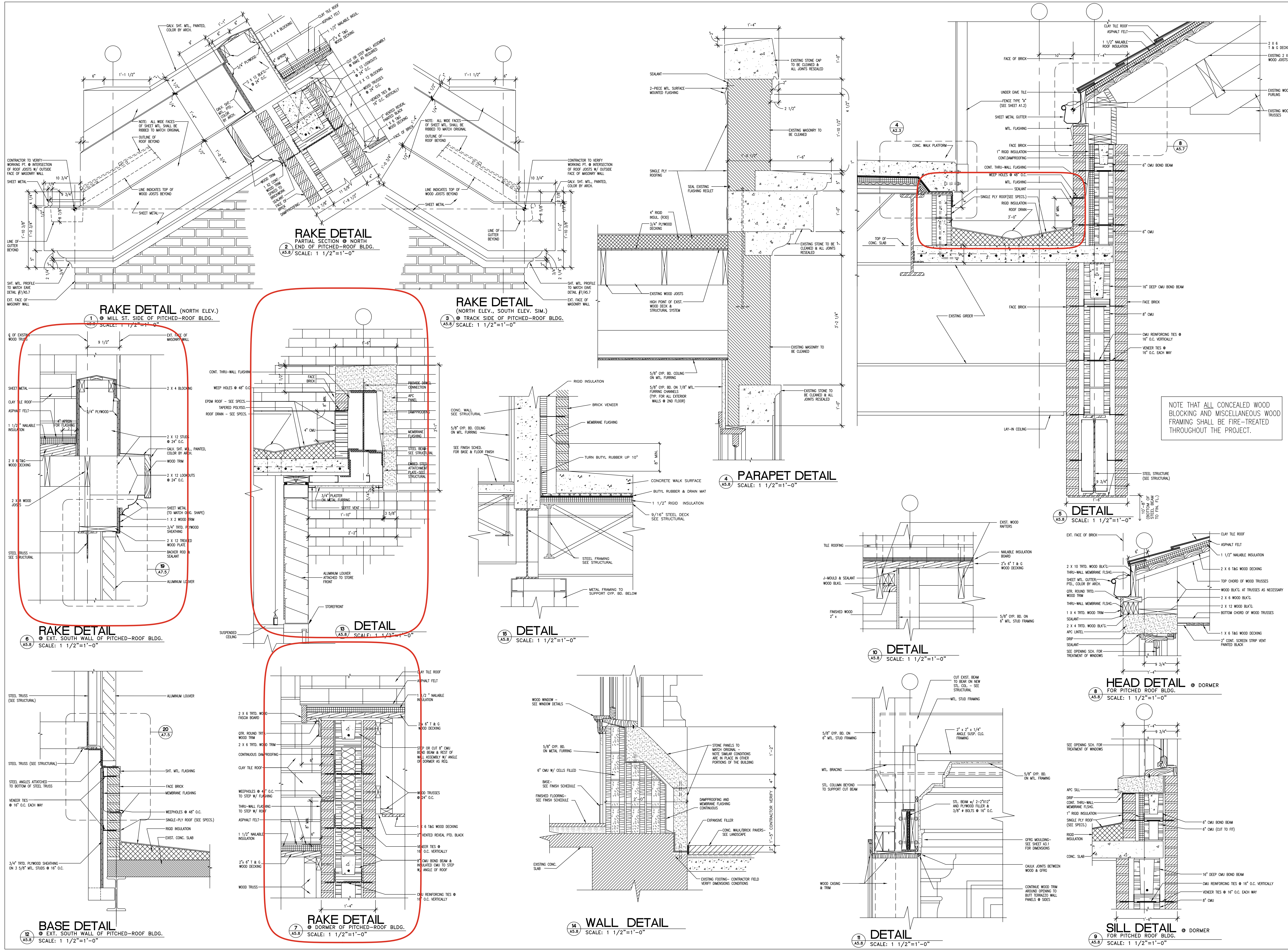
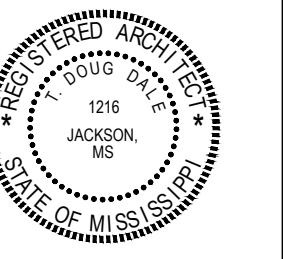
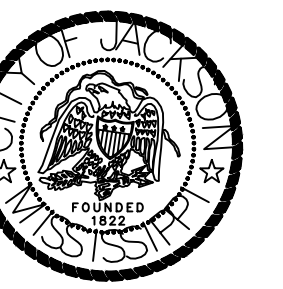
CHECKED BY:
DRAWN BY:
NOTES PAGE NUMBER - 829

BUILDING / WALL Sections
FILENAME :

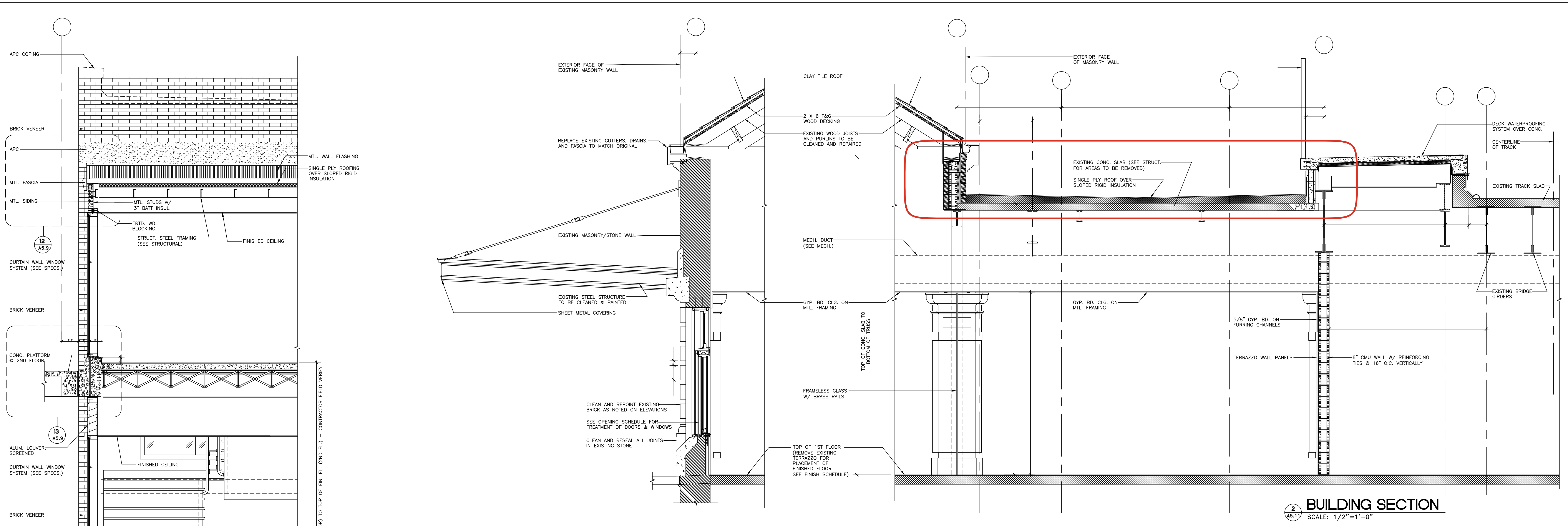
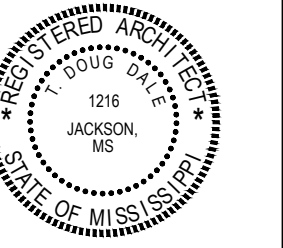
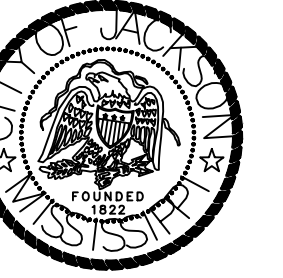
REVISIONS :
29 OCTOBER 1999
27 FEBRUARY 2000
28 APRIL 2000
29 JUNE 2000

DATE: 08/05/00 - 10/27/00

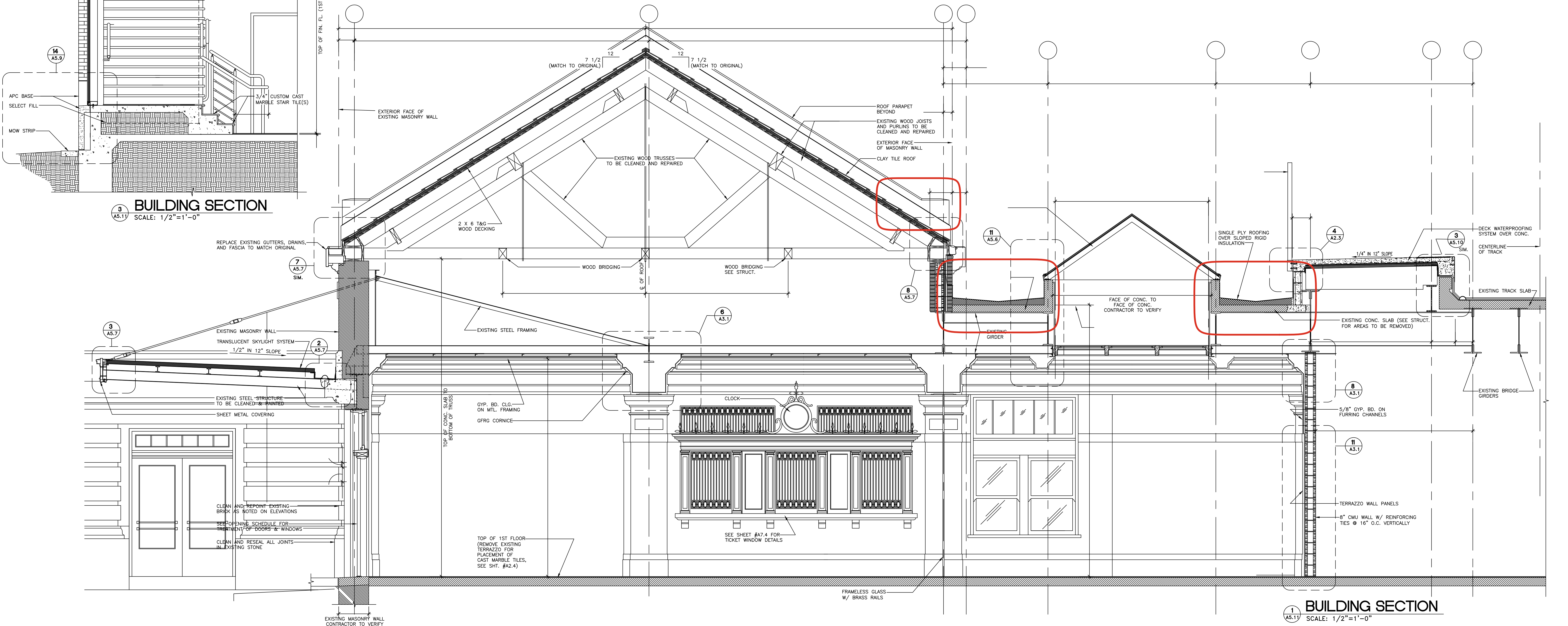
SHEET **A5.4**
OF SHEETS



NOTE THAT ALL CONCEALED WOOD BLOCKING AND MISCELLANEOUS WOOD FRAMING SHALL BE FIRE-TREATED THROUGHOUT THE PROJECT.

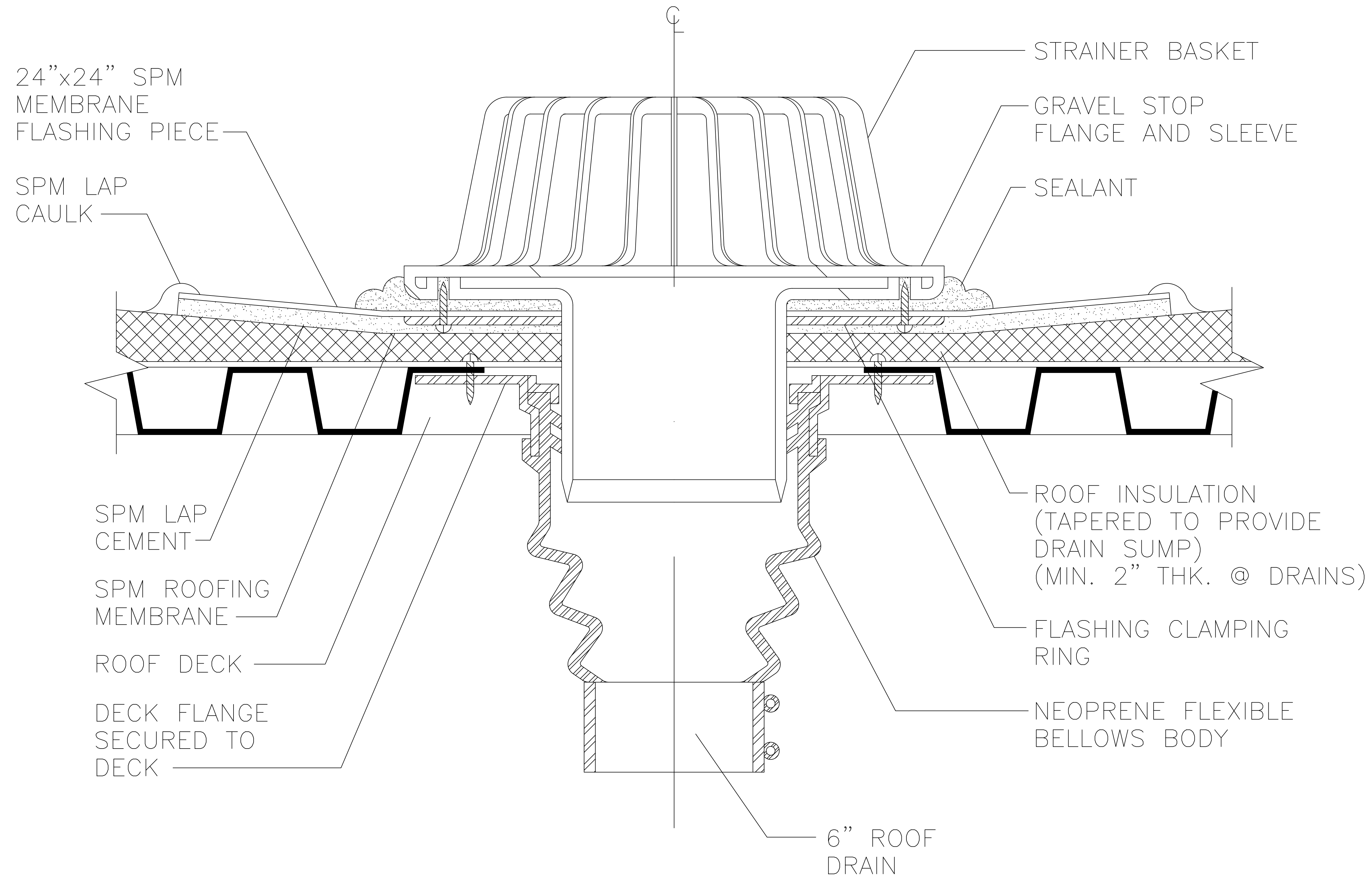
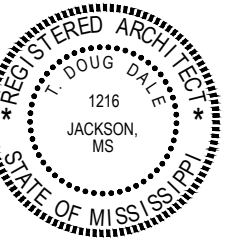
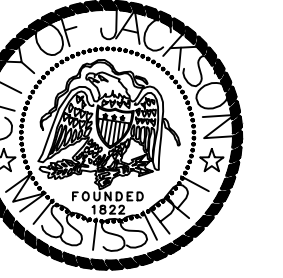


2 BUILDING SECTION
SCALE: 1/2"=1'-0"

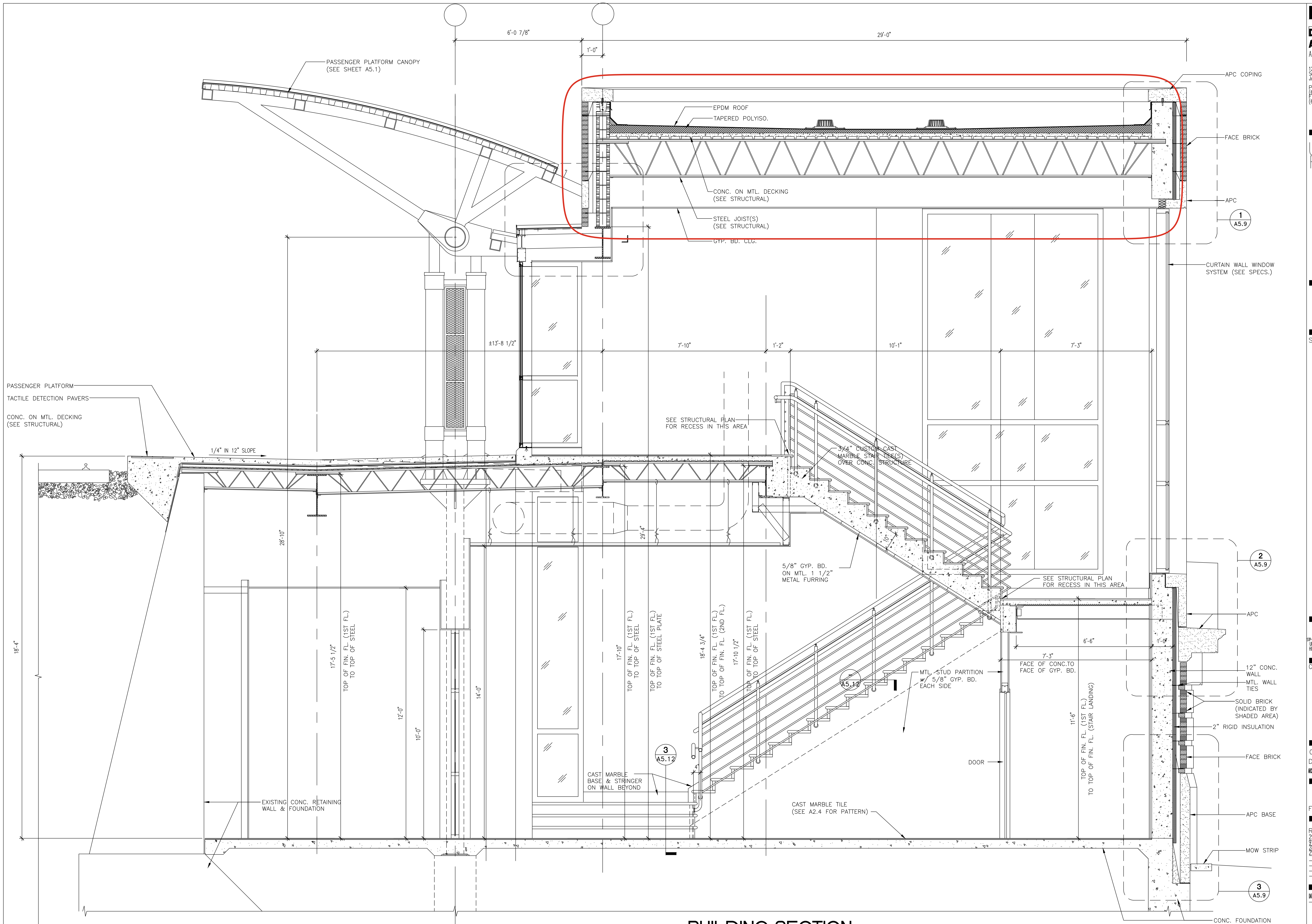
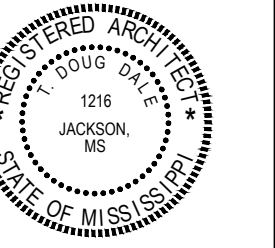
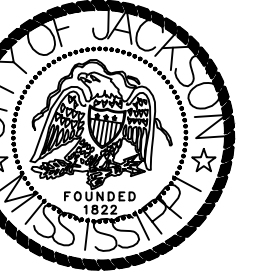


1 BUILDING SECTION
SCALE: 1/2"=1'-0"

3 BUILDING SECTION
SCALE: 1/2"=1'-0"



2 Drain Section
 A2.3 Scale: 3" = 1' - 0"



BUILDING SECTION
SCALE: 1/2"=1'-0"